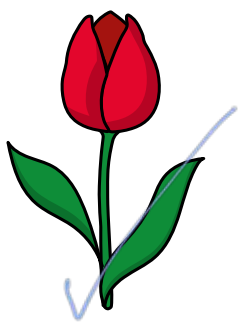
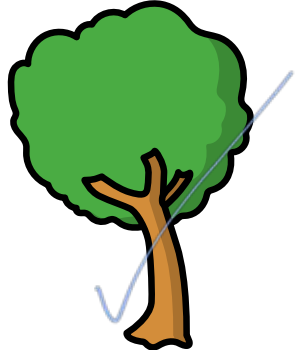
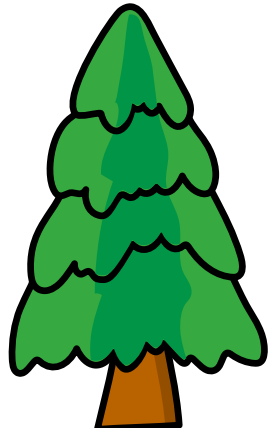


# Compare lengths and heights

**I** a) Tick the taller flower.



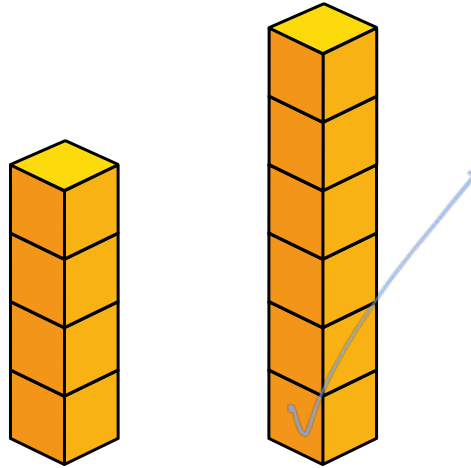
b) Tick the shorter tree.



c) Tick the longest ribbon.



d) Tick the taller tower.



2 Complete the sentences.

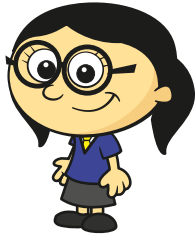


● C is longer than B

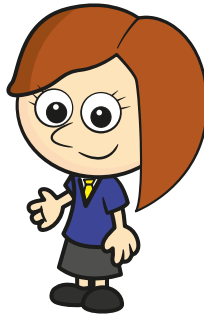
● A is the longest train.

● B is the shortest train.

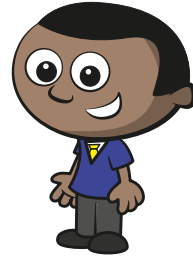
3 Complete the sentences.



Annie



Rosie



Mo

a) Rosie is the tallest.

b) Mo is taller than Annie.

c) Annie is the shortest.

Compare the heights of your friends.

