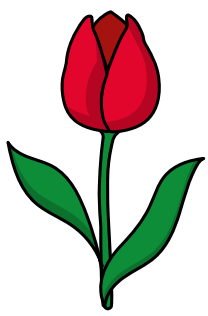
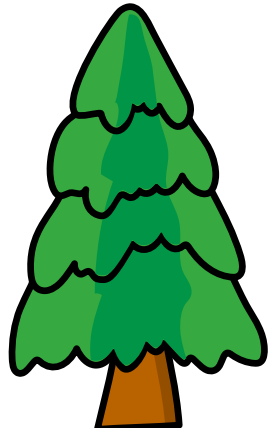


# Compare lengths and heights

**I** a) Tick the taller flower.



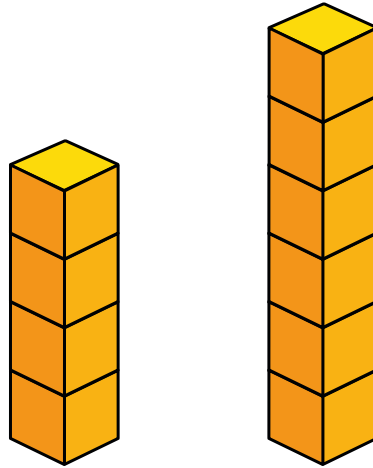
b) Tick the shorter tree.



c) Tick the longest ribbon.



d) Tick the taller tower.

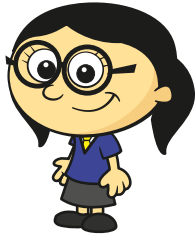


2 Complete the sentences.

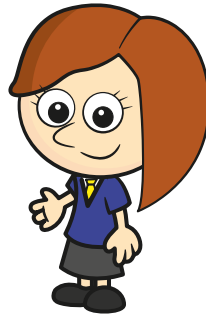


- C is longer than \_\_\_\_\_
- \_\_\_\_\_ is the longest train.
- \_\_\_\_\_ is the shortest train.

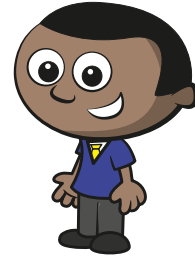
3 Complete the sentences.



Annie



Rosie



Mo

a) \_\_\_\_\_ is the tallest.

b) Mo is taller than \_\_\_\_\_.

c) \_\_\_\_\_ is the shortest.

Compare the heights of your friends.

