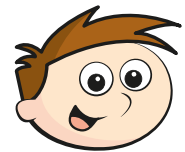


# Add mixed numbers

1 Teddy and Mo are adding mixed numbers.

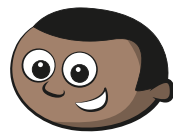


$$3\frac{1}{4} + 2\frac{5}{8} = 5 + \frac{7}{8} = 5\frac{7}{8}$$

Teddy

$$3\frac{1}{4} + 2\frac{5}{8} = \frac{26}{8} + \frac{21}{8} = \frac{47}{8} = 5\frac{7}{8}$$

Mo



Whose method do you prefer? \_\_\_\_\_

Talk about it with a partner.



2 Complete the calculations.

a)  $1\frac{2}{5} + 2\frac{3}{10} =$

b)  $2\frac{2}{5} + 2\frac{3}{10} =$

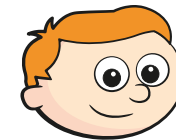
c)  $1\frac{3}{4} + 3\frac{3}{20} =$

e)  $4\frac{1}{4} + 2\frac{11}{16} =$

d)  $1\frac{3}{16} + 4\frac{3}{4} =$

f)  $1\frac{4}{15} + 3\frac{2}{3} =$

3



$$2\frac{3}{5} + 1\frac{7}{10} = 3 + \frac{13}{10} = 3\frac{13}{10}$$

How can Ron improve his answer?

---

---

4

Complete the additions.

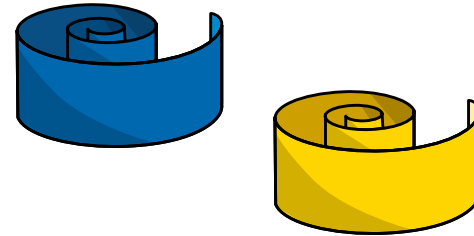
a)  $2\frac{3}{4} + 3\frac{5}{12} =$

b)  $3\frac{2}{3} + 2\frac{7}{12} =$

c)  $5\frac{1}{6} + 3\frac{11}{12} = \square$

d)  $6\frac{7}{15} + 3\frac{3}{5} = \square$

5 A blue ribbon is  $2\frac{4}{9}$  metres long.



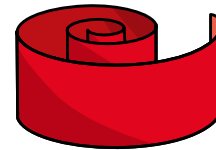
A yellow ribbon is  $3\frac{2}{3}$  metres long.

a) What is the total length of the blue and yellow ribbon?

m

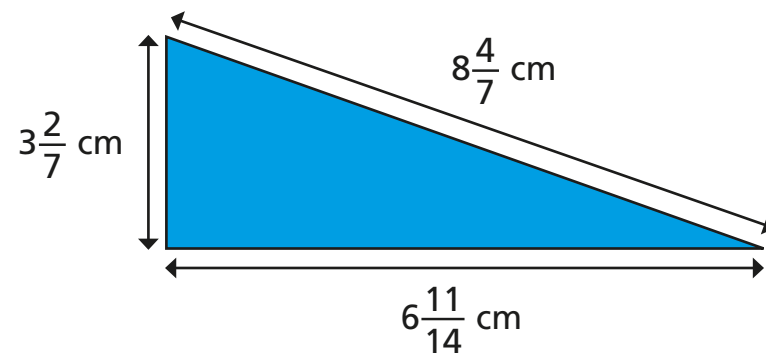
b) A red ribbon is  $1\frac{5}{18}$  metres longer than the yellow ribbon.

How long is the red ribbon?



m

6 Calculate the perimeter of the triangle.



cm

7 Complete the calculation in three different ways.

$\frac{\square}{5} + \square \frac{\square}{15} = 6 + \frac{11}{15} = \square$

$\frac{\square}{5} + \square \frac{\square}{15} = 6 + \frac{11}{15} = \square$

$\frac{\square}{5} + \square \frac{\square}{15} = 6 + \frac{11}{15} = \square$

Compare answers with a partner.

8 Here are some number cards.



a) What is the greatest total you can make with two cards?

b) What is the smallest total you can make with two cards?