

1 Draw two different squares.

2 Draw three different rectangles.

3 Draw three different triangles.

4 Draw three different hexagons.

5 Compare all the shapes you have drawn with a partner. What differences can you see?

6 Annie is drawing a 2D shape.

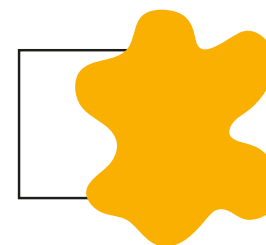


Draw Annie's shape.

Is there more than one answer?



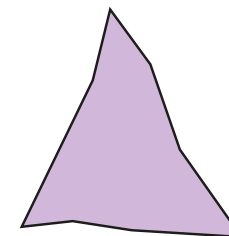
7 Teddy has drawn a 2D shape. He has spilt ink on his drawing. What could Teddy's shape be? What shape can it **not** be? How do you know?



8



I have drawn a triangle.



Do you agree with Whitney?

Why?

9 Follow the instructions.

Draw your answer on a squared grid.

- Draw a rectangle in the centre of the grid.
- Draw a square inside the rectangle.
- Draw a hexagon below the rectangle.
- Draw a triangle above the rectangle.

Make up some instructions like this for a partner.

