

Aim

- To know what a place of worship is.

Success Criteria

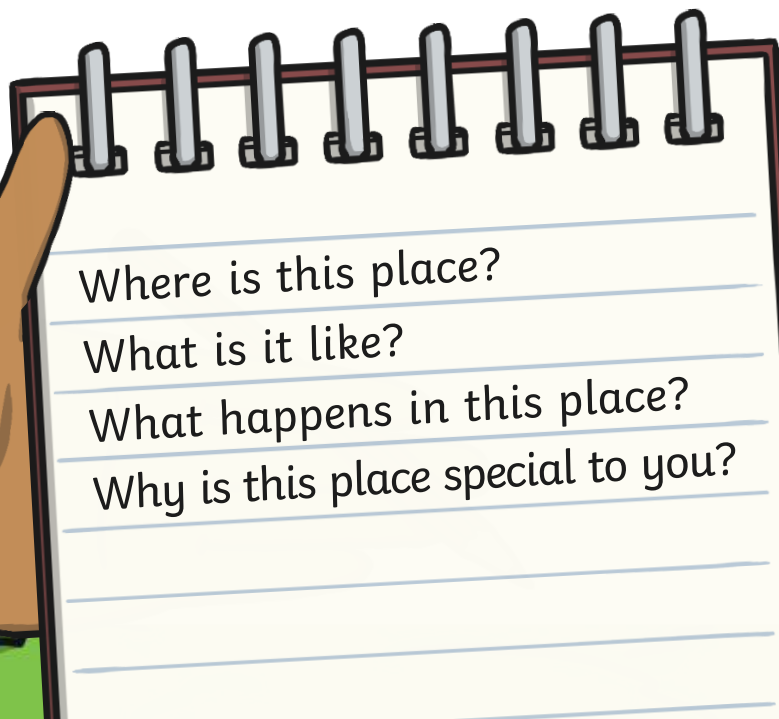
- I can talk about a place that is special to me.
- I know what worship is.
- I can name and talk about some examples of places of worship.
- I can discuss how a place of worship is a special place to religious believers.

What Is Special to You?



Think of a place that is special to you.
Can you picture it?

Tell someone about your special place.



Where is this place?
What is it like?
What happens in this place?
Why is this place special to you?



A Special Place



Some places are special to people. Why do you think this is?

Places can be special to people for different reasons. Sometimes, a place is special because an important thing happened there. Other places are special because they make a person feel a particular way.

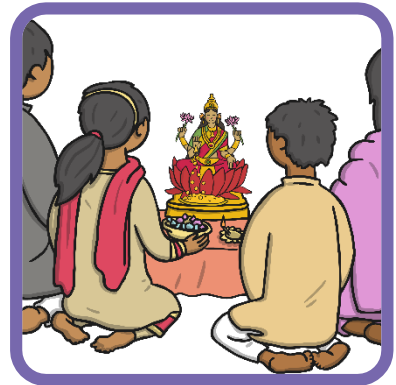
Some groups of people may have special places in common. If you support the same football team, your home stadium might be special to you. If a group of people all enjoy nature, they might have a park or lake that is special to them all.



Worship



What is happening in these pictures?



Worship



The pictures all show people worshipping.
What do you think worship is?

Worship is acting in a way that shows
respect or love to something or someone.

People who belong to a religion worship
their god or gods.



A Place of Worship Is...



A place of worship is a special place within a religion where believers go to:

- ✓ pray;
- ✓ worship;
- ✓ learn about their religion;
- ✓ spend time together as a community.





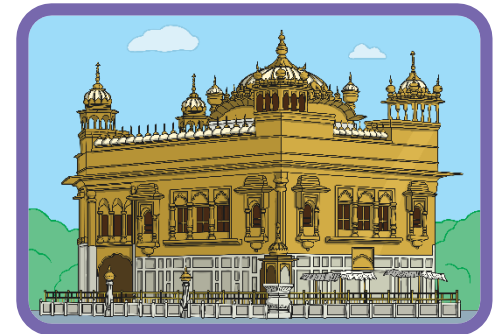
These are places of worship:



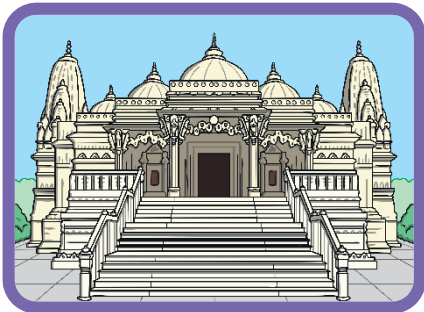
Christian church



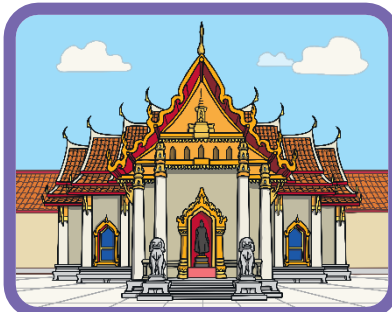
Jewish synagogue



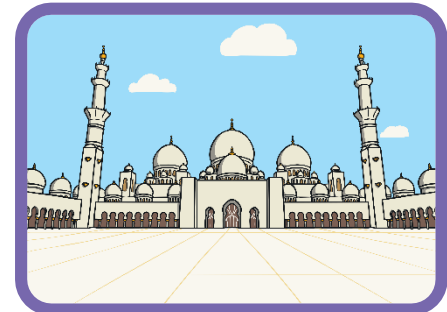
Sikh gurdwara



Hindu mandir



Buddhist temple



Muslim mosque