



# Question Mark or Full Stop?

I can spot sentences that need a question mark.



1. Put a question mark or a full stop in the box to finish off the sentence correctly.

a) Would you like a slice of cake



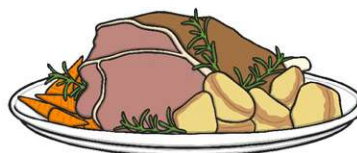
b) Can I play with you



c) What is Farhan doing



d) Mum is cooking dinner



e) Is it raining

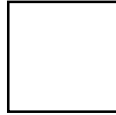


f) I like my hat

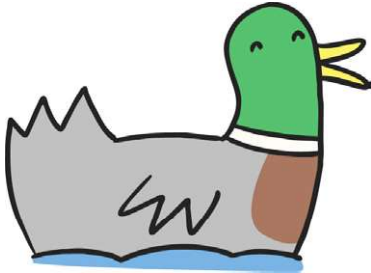




g) This flower smells nice



2. Now write your own question to go with this picture.



---

---

---

---