

Animal Bodies

Aim

- I can describe common animals.
- I can compare common animals.

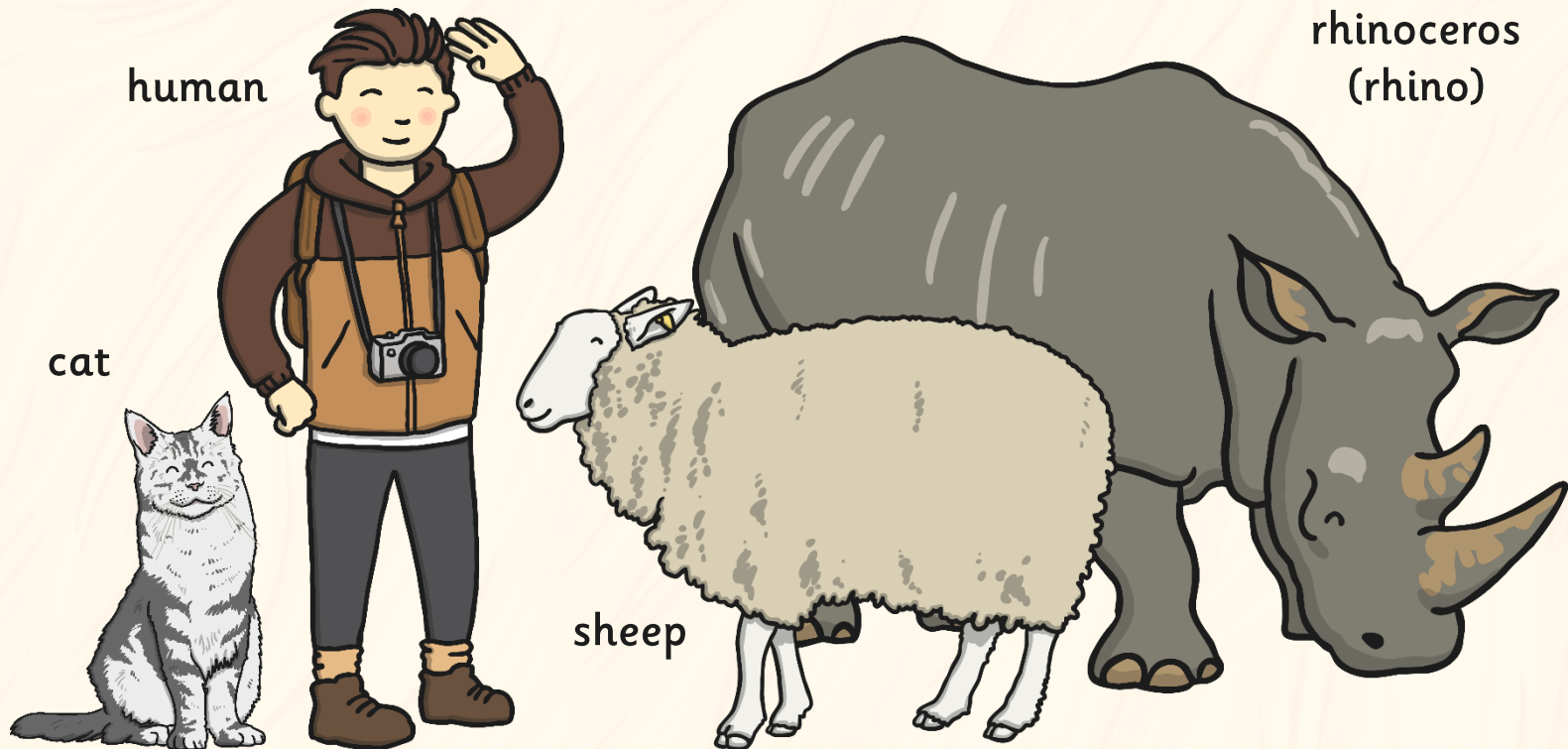
Success Criteria

- I can say the names for animal body parts.
- I can say the body parts that I see in a pictures of animals.
- I can say things that are the same about two animals.
- I can say things that are different about two animals.

Animals Including Humans

All living creatures are animals.

Humans are animals too! Humans are a kind of **mammal**.



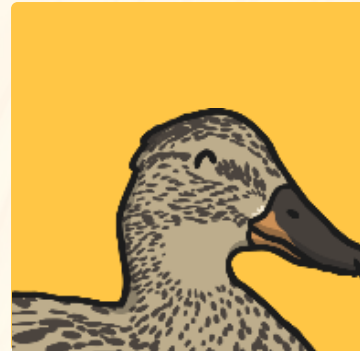
Animals Including Humans

Animal bodies have lots of body parts that are the same as yours, though they might look quite different.



Animals Including Humans

Heads



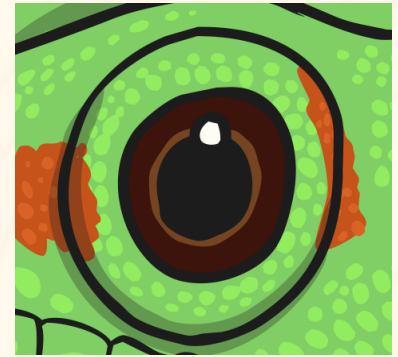
Animals Including Humans

legs



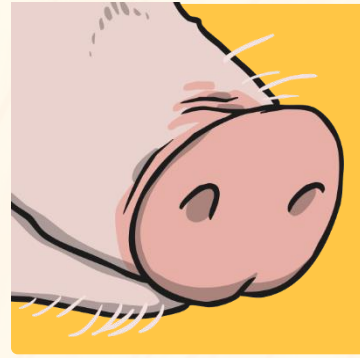
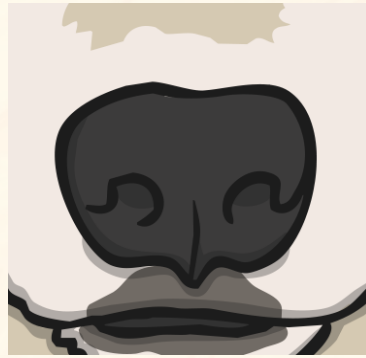
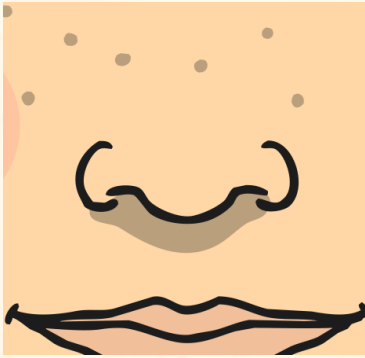
Animals Including Humans

eyes



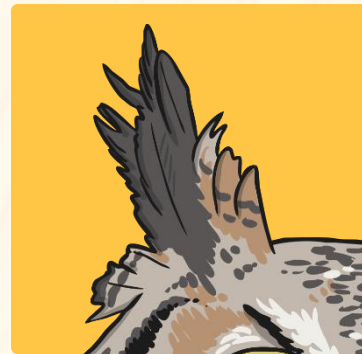
Animals Including Humans

noses



Animals Including Humans

ears

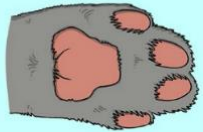


Animal Body Parts

Some animal body parts are different to those that you have.
Can you think of any different body parts?



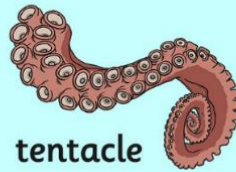
Animal Parts



paw



claw



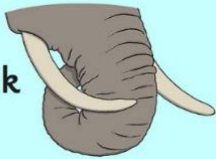
tentacle



flipper



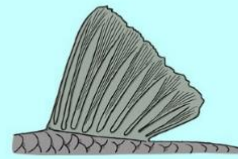
antler



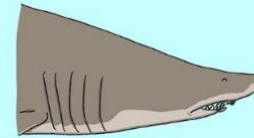
tusk



claw



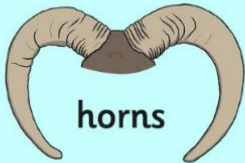
fin



gills



hoof



horns



trunk



wing



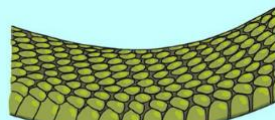
whiskers



beak



skin



scales



fur



feathers



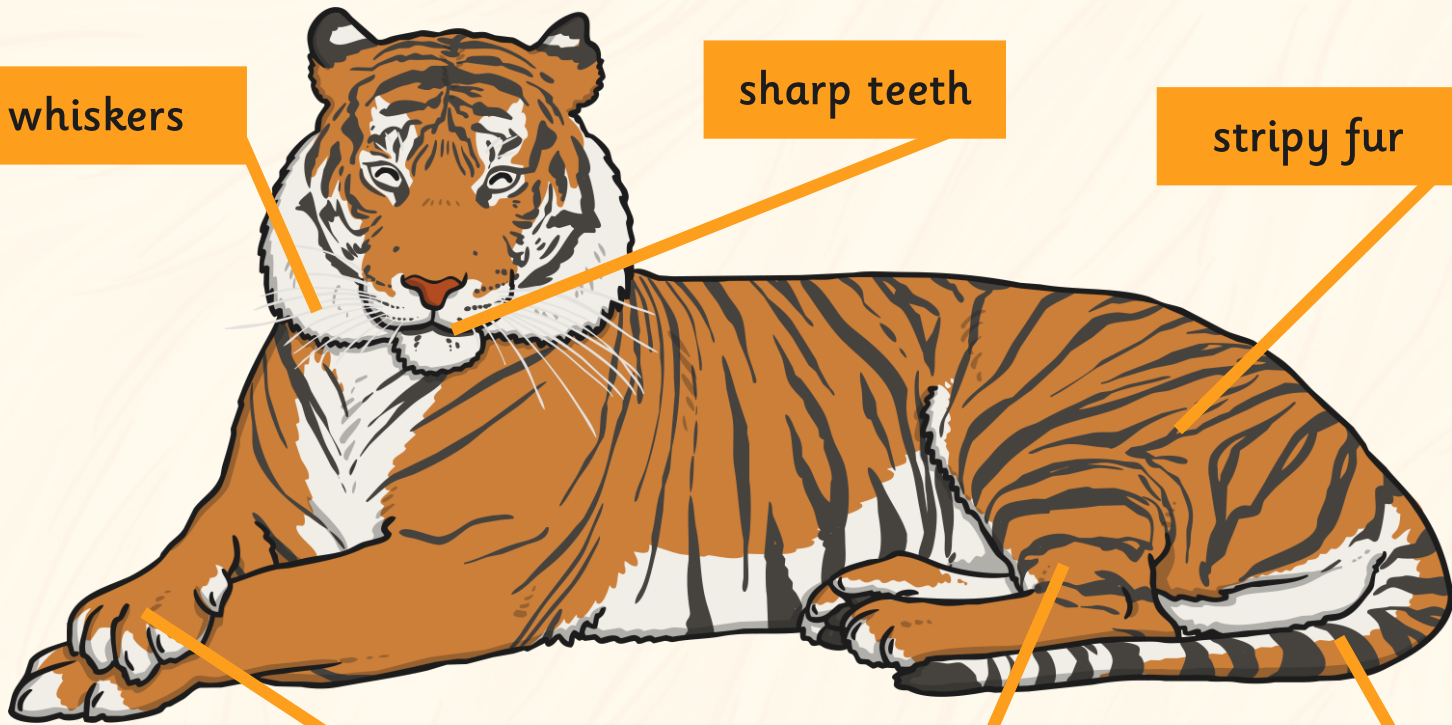
Describing Animals



whiskers

sharp teeth

stripy fur

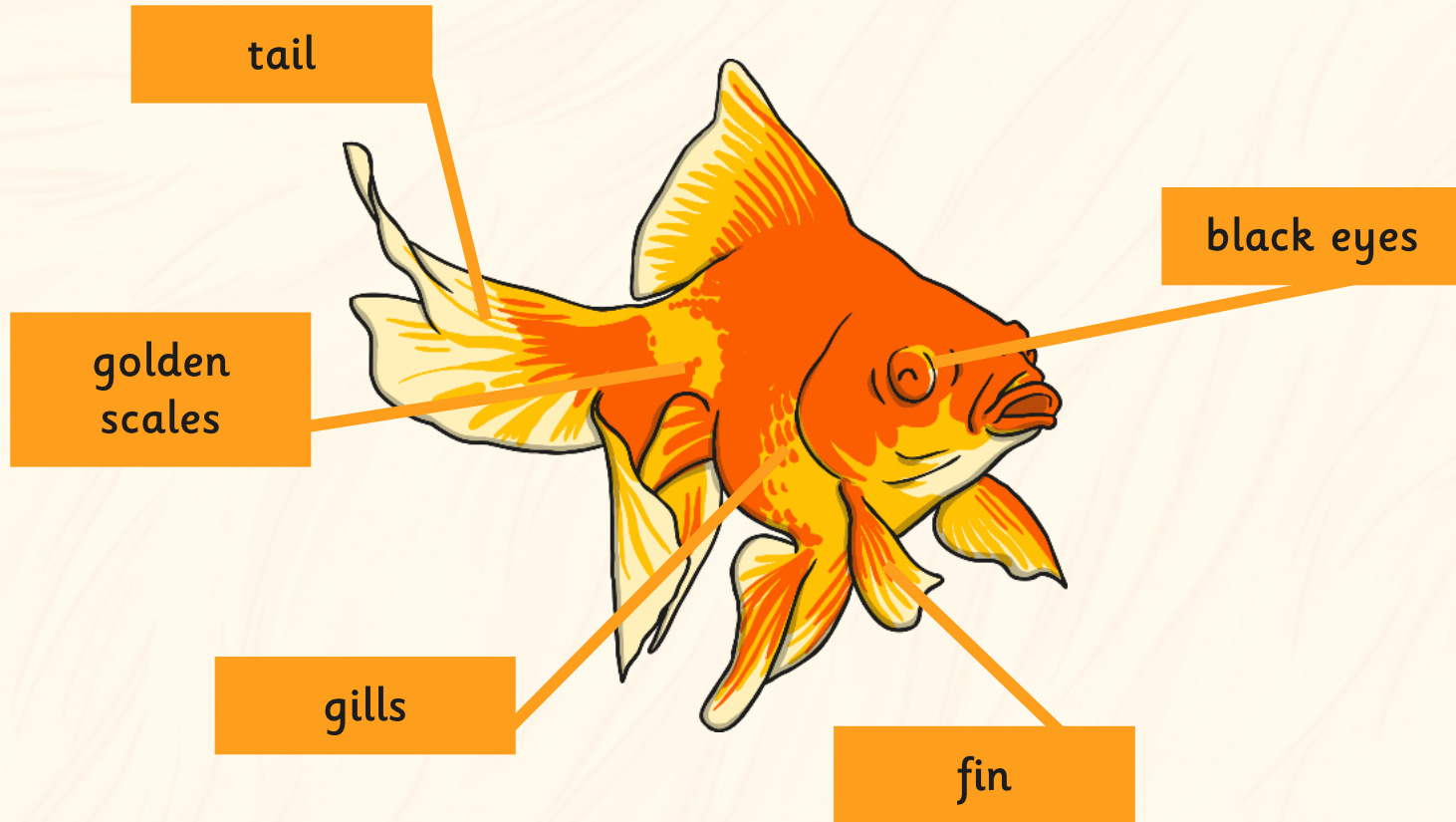


paws

four legs

long tail

Describing Animals



Animal Bodies



Animal Bodies

 <p>dog</p> <hr/> <hr/> <hr/> <hr/>	 <p>alligator</p> <hr/> <hr/> <hr/> <hr/>
--	--

twinkl planit
twinkl.co.uk

Science | Year 1 | Animals including Humans | Animal Bodies | Lesson 6

skin scales fur feathers

Look closely at the animal.
What are the animal's body parts called?

Find the right word for each body part on the word list.
Write a sentence to describe it.

Now, chose an animal of your own to draw and describe.