

Practice Sheet

Term 3 Set 1 Week 4

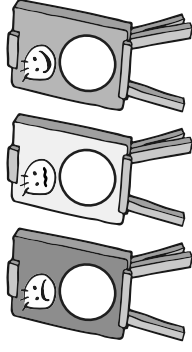
Name Date

Spelling patterns **silent k, w, b, t, h, s; extension;** word list

I'm exhausted after that cross-country run.



I feel like a wreck too!



Spellings	Write	Write	Cover and write	Cover and write
knuckle				
wreck				
crumb				
whistle				
exhaust				
isle				
doubtful				
rhombus				
twelfth				
vegetable				

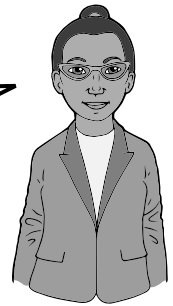
Total /10

.....

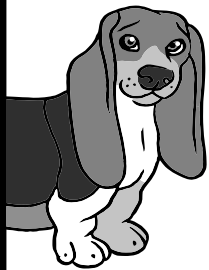


Spud's Spelling Search

Find as many words as possible from Set 1.
You may use a list to help you.



D	M	T	U	T	B	X	R	H	O	E	Y	X	O	G
R	W	R	S	M	S	E	O	L	N	R	I	I	C	B
O	O	E	I	U	I	U	H	O	N	E	S	T	M	I
W	F	L	N	D	A	N	G	J	P	C	T	O	P	S
S	C	X	L	K	T	H	G	G	K	N	B	S	Y	L
S	T	O	M	A	C	H	X	N	E	I	V	M	A	E
K	S	C	B	K	O	S	I	E	T	S	B	T	K	F
N	N	R	C	S	C	G	T	H	Z	O	T	W	P	V
E	W	U	T	U	H	E	I	E	L	T	S	E	R	W
T	R	M	C	T	M	S	R	I	P	R	G	L	T	D
S	I	B	S	K	T	R	E	W	S	N	A	F	O	E
I	N	L	R	L	L	H	O	U	R	L	W	T	N	B
L	K	E	E	H	M	E	T	S	Y	S	A	H	K	R
E	L	S	I	A	T	H	U	M	B	U	Y	N	V	I
V	E	G	E	T	A	B	L	E	S	K	J	X	D	S



There are **32 words** from **Set 1** to find. They are set out horizontally, vertically and diagonally. To make it harder, some words read backwards. Write the words as you find them on the lines below.

.....

.....

.....

.....

.....

.....

.....

.....

.....

.....