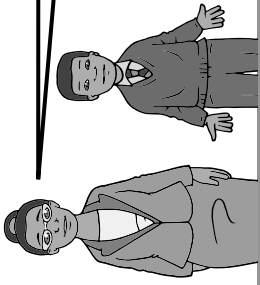


Practice Sheet

Term 1 Set 2 Week 7

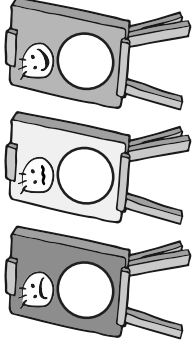
Name Date

Spelling patterns **-ant, -ance, -ent, -ence, extension, word list**



It's important that you understand the difference between a teacher and a train.

The teacher says, "Spit out the gum", and the train says, "Chew, chew."



Spellings	Write	Write	Cover and write	Cover and write
important				
importance				
reluctant				
reluctance				
different				
difference				
disturbance				
violence				
determined				
develop				

Total /10

.....

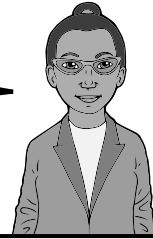


Activity Sheet

Term 3 Set 2 Week 7

Name

Match the dictionary definition to the correct homophone.



father/farther led/lead desert/dessert past/passed
band/banned baron/barren flaw/floor currant/current

- Officially, not allowed to do something
- A waterless desolate area of land
- A small dried fruit
- Moved beyond something in a specified direction
- A type of metal
- An adverb to describe a greater distance
- A member of the British nobility
- A mark or a blemish
- The sweet course to finish a meal
- Describes land without any vegetation
- A flat, thin loop of material
- The past tense of lead
- A flow of water, air or electricity
- The time before the moment you are speaking of
- The surface on which you walk
- A man with children