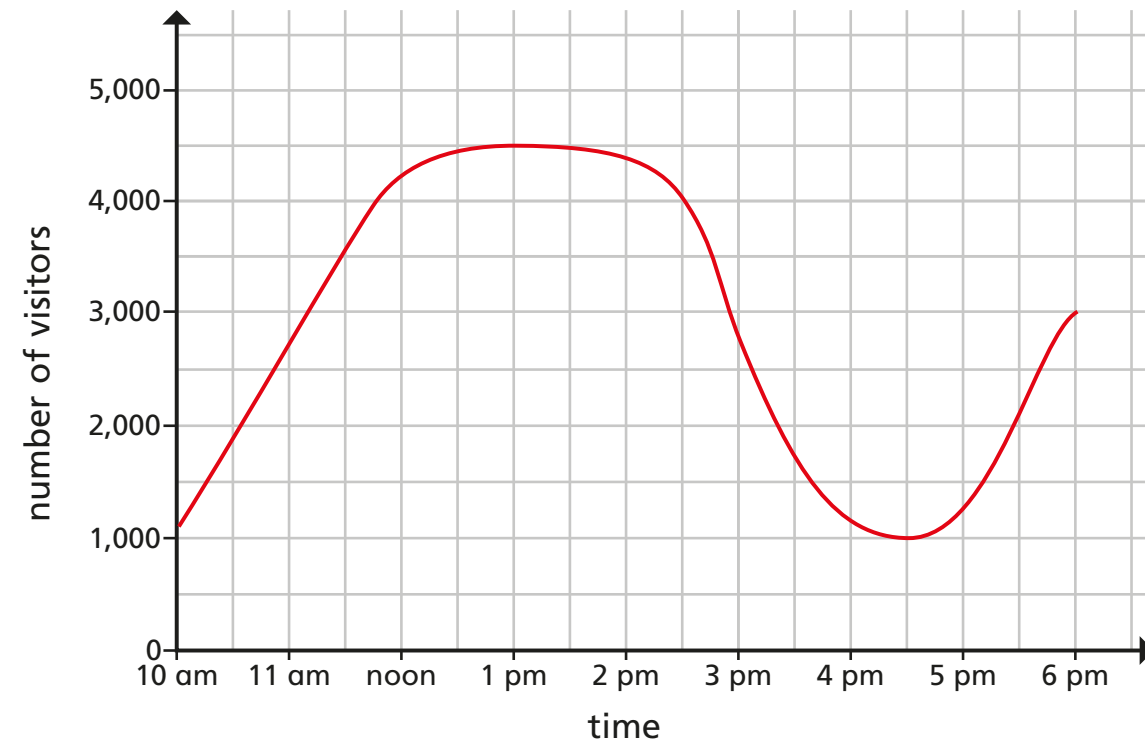


# Use line graphs to solve problems

- 1 The graph shows the number of visitors to a shopping centre during one day.



- a) At what time was the greatest number of visitors at the shopping centre?
- b) What was the difference between the number of visitors at noon and 3 pm?
- c) For how long were there 4,000 or more visitors at the shopping centre?
- d) Approximately how many visitors were at the shopping centre at 2 pm?

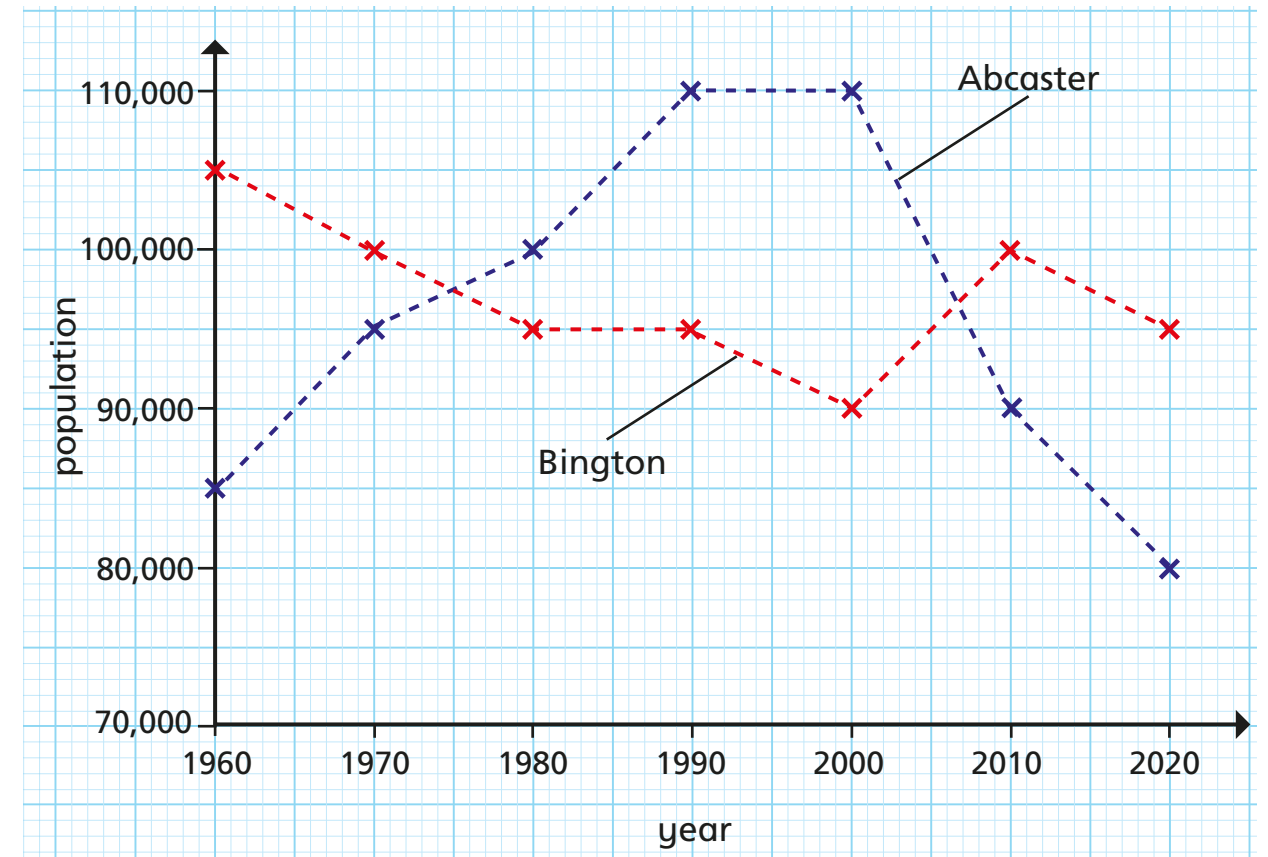
1 pm

1,500

2h 45m

4,400

- 2 The graph compares the populations of two towns between 1960 and 2020



- a) How often was the population recorded?

Every 10 years

- b) Estimate which town had the greater population in 1974.

Bington

- c) Estimate the two years in which the populations were the same in both towns.

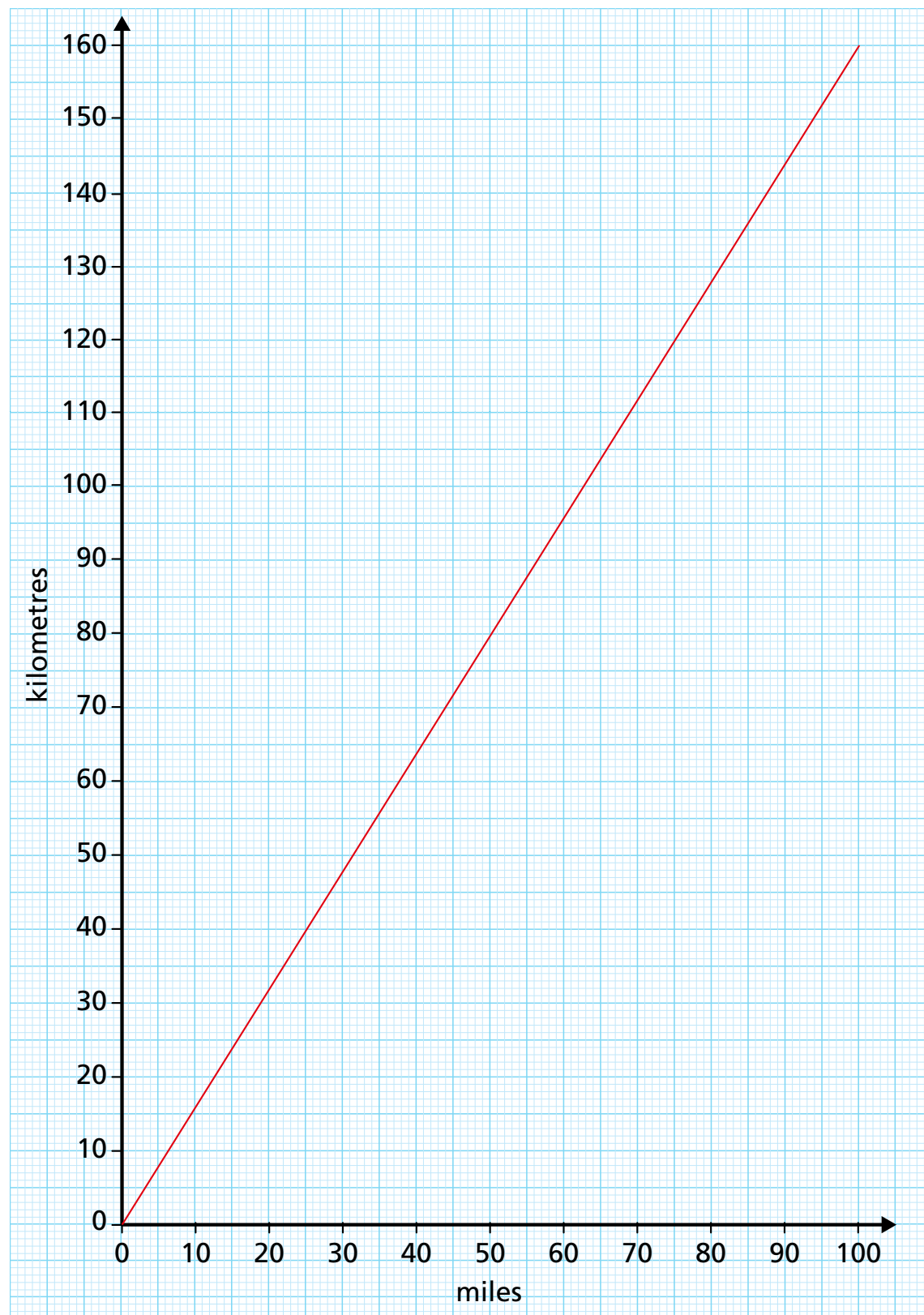
1975 and 2007

Talk to a partner about the accuracy of your answers.

- d) In which years was the difference between the populations greatest?

1960 and 2000

3 The graph shows the conversion between miles and kilometres.



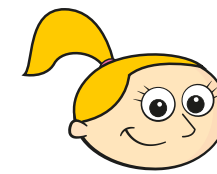
a) How many kilometres are there in 45 miles?

71 km

b) How many miles are there in 128 kilometres?

80 miles

c) Mo and Eva want to know how far 240 miles is in kilometres.



Eva

I'm going to convert 60 miles to kilometres and multiply my answer by 4

Mo



I'm going to convert 80 miles to kilometres and multiply my answer by 3

Who will find the correct answer? Both

Explain why.

Convert 240 miles to kilometres.

384 km

d) A coach driver can drive a maximum of 400 miles in one day.

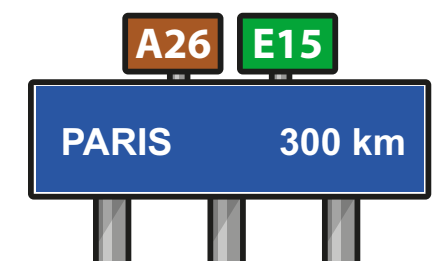
A coach driver is driving from Birmingham to Paris.

He gets a ferry from Dover in England to Calais in France.

In Dover he sees a sign.



In Calais he sees a sign.



Is the coach driver allowed to drive from Birmingham to Paris in one day?

yes

Talk about your reasons with a partner.