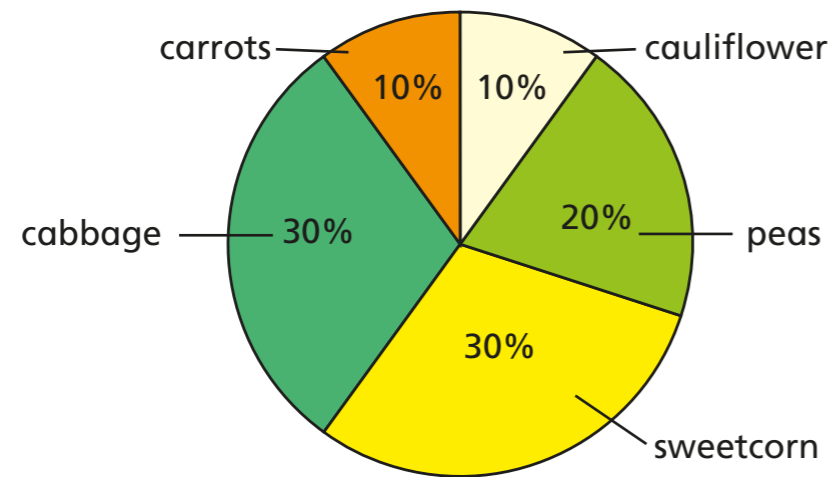


Pie charts with percentages



- 1 60 children were asked to choose their favourite vegetable from five options.



- a) Work out the number of children who chose each vegetable.

carrots	6
peas	12
sweetcorn	18
cabbage	18
cauliflower	6

- b) How many more people chose peas than cauliflower?

6

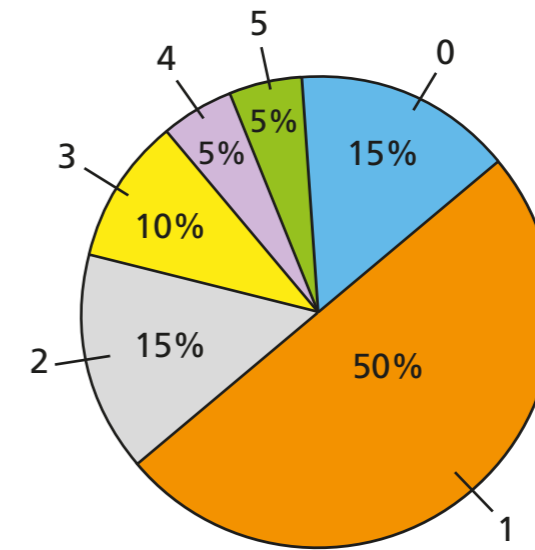
Compare methods with a partner.

- c) How many more people chose sweetcorn or cabbage than chose carrots?

30

Compare methods with a partner.

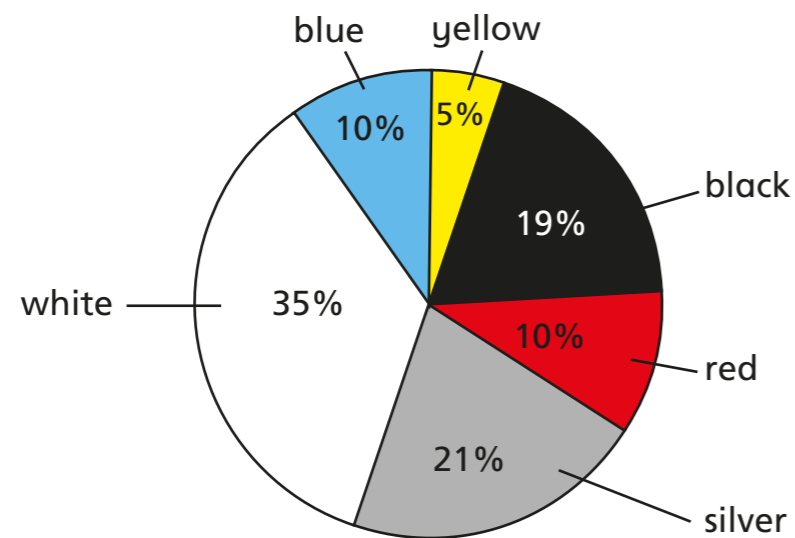
- 2 160 people were asked how many siblings they have. The results are shown in the pie chart.



Complete the table. Show each step of your workings.

Siblings	Frequency
0	24
1	80
2	24
3	16
4	8
5	8

- 3 The pie chart shows the colours of cars in a car park on one day. There were 30 yellow cars.



- a) How many cars were in the car park in total?

- b) Complete the table.

Colour of car	Frequency
yellow	30
black	
red	
silver	
white	
blue	

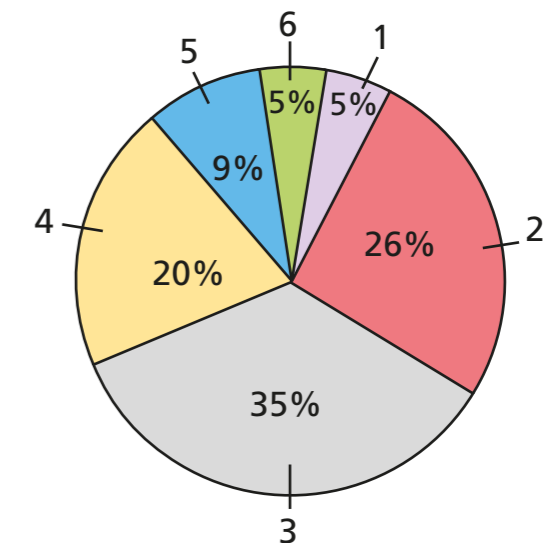
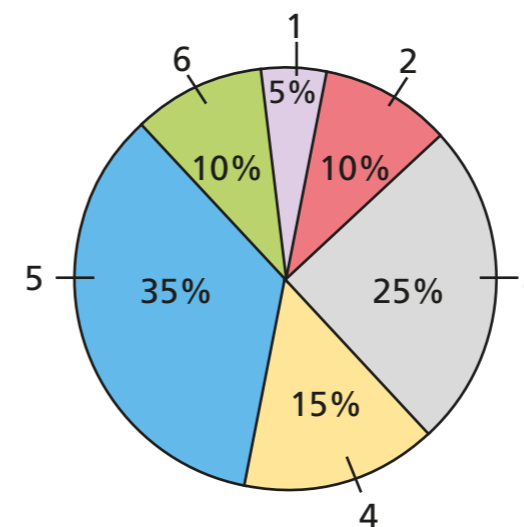
How can you check your answers?



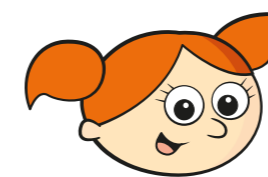
- 4 The pie charts show the number of bedrooms in the houses in Sollom and Rufford.

Sollom: 20 houses

Rufford: 1,000 houses



- a)



There are twice as many six-bedroom houses in Sollom than in Rufford because 10% is double 5%.

Do you agree with Alex? _____

Explain why.

- b) How many more one-bedroom houses are there in Rufford compared to Sollom?

